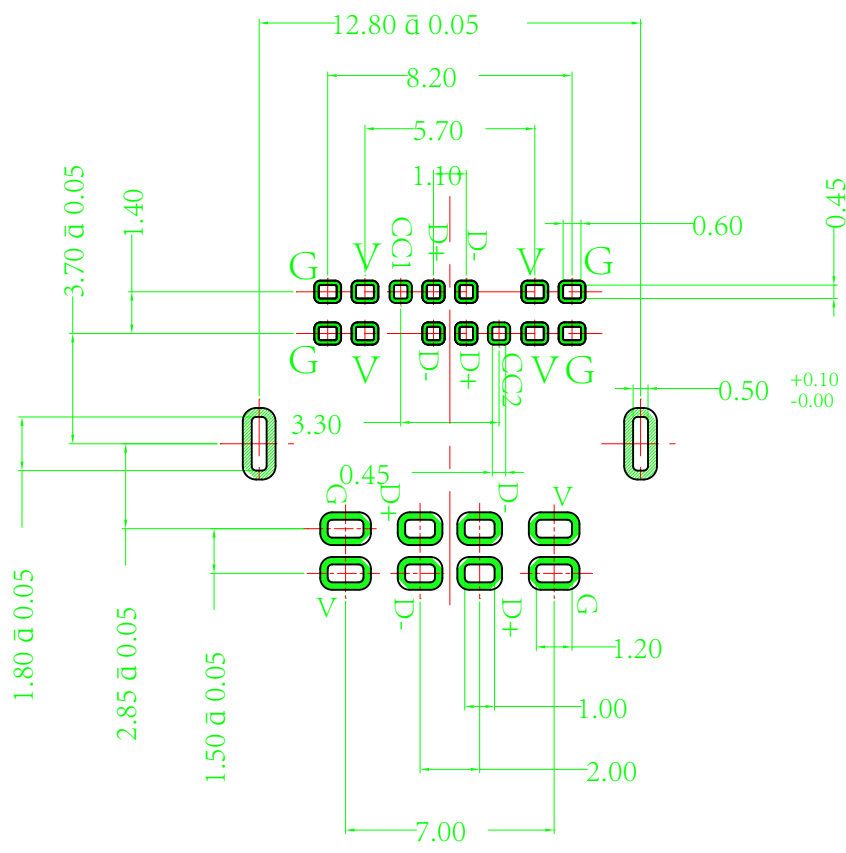
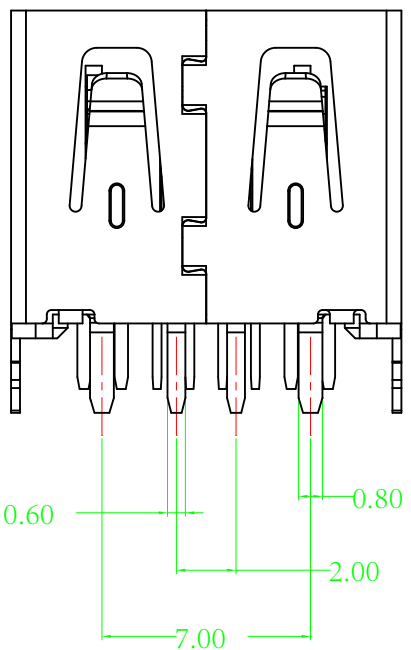
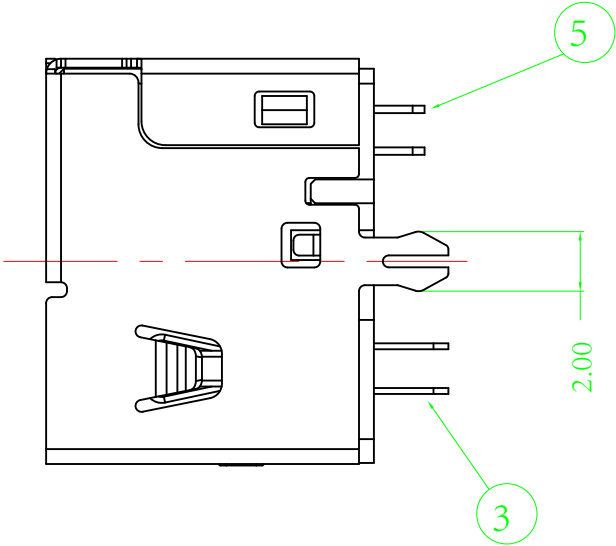
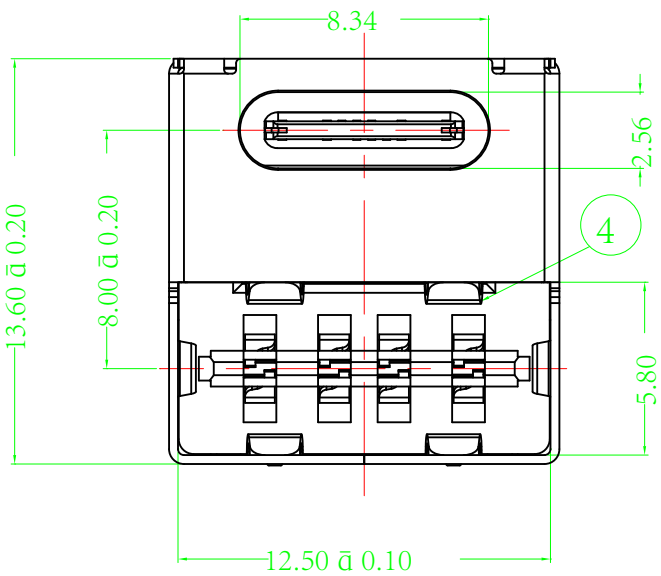
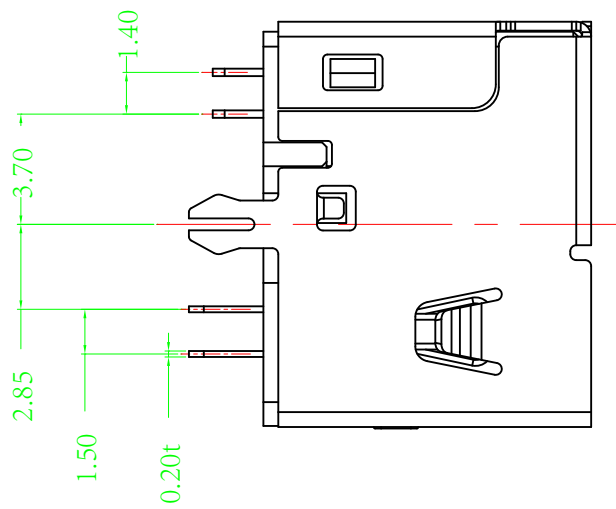


- Notes:**
- 1. Mechanical Performance:**
- 1.1 Insertion Force: 5~20N.
 - 1.2 Withdrawal Force: 5~20N
 - 1.3 Durability: 1000 CYCLES.
- 2. Electrical Performance:**
- 2.1 Rated Current: 5A MAX.
 - 2.2 Rated Voltage: 30V MAX.
 - 2.3 Withstand Voltage: 100V AC.
 - 2.4 Contact Resistance: 40mΩ MAX (Initial), 50mΩ MAX (after 5,000 cycles).
 - 2.5 Insulation Resistance: 100MΩ MIN.
- 3. Environmental Temperature:**
- 3.1 Temperature Range: -30°C ~ +85°C.
 - 3.2 Salt Spray: 24 hours.
- 4. Dimensional Markings:**
- Marked with "⌀" indicates FAI dimensions.
- Marked with "▽" indicates critical inspection dimensions.
- Marked with "CPK" indicates CPK inspection dimensions.



Recommended P.C.B Layout

Tolerance:±0.05

UT20FJ014 SX 02ZA

- S0:G/F Gold In Contact Area
- 100u" Tin In Tail Area
- S1:1U" Gold In Contact Area
- 100u" Tin In Tail Area
- S3:3u" Gold In Contact Area
- 100u" Tin In Tail Area
- S4:5u" Gold In Contact Area
- 100u" Tin In Tail Area
- S5:15u" Gold In Contact Area
- 100u" Tin In Tail Area
- S6:30u" Gold In Contact Area
- 100u" Tin In Tail Area

⑦	Type C Molding	LCP+30GF	BLACK	UL 94V-0
⑥	Type C Center Piece	SUS201-H		
⑤	Type C Terminal	C2680-H		Plated: G/F Tin 80-120u"Ni:30u"
④	Intermediate Layer	SUS201-1/4H		
③	USB Terminal	C2680-H		Plated: G/F Tin 80-120u"Ni:30u"
②	Shell	C2680-H/SPCC		Ni :40-60"
①	Main Body Core	LCP+30GF	BLACK	UL 94V-0
Serial Number	Description	Material	Color	Remarks

						General Tolerance			Material		Shenzhen Kinghelm Electronics Co., Ltd.					www.kinghelm.net		
						DIM	TOL	TOL	Material Specification		KH-TYPE-14P+USB-SZ							
						X.	± 0.5	± 0.5	Drawing	Bai min	Product Name	USB Type-C Female Socket 14PIN with USB 2.0 Female Double-sided Insertion Combined, Copper Shell						
						.X	± 0.3	± 0.3	Design	Xu bo	Item Number	UT20FJ014S004ZA						
						.XX	± 0.2	± 0.2	Review	Deng yuanjie	Drawing Number						Version	A
	A	Original Release	21-03-10		Bai hualin	.XXX	± 0.1	± 0.1		Approval	Bai hualin	Unit	MM	Scale	1 : 1	Page Number	1/1	Perspective
ECN (DCN) NO.	Version	Description of Content	Date	Change	Approval													