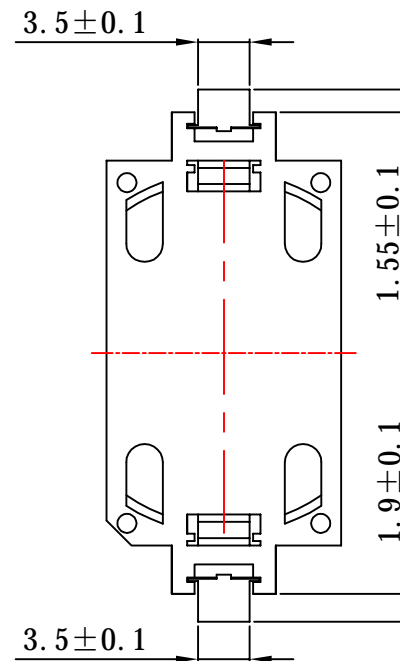
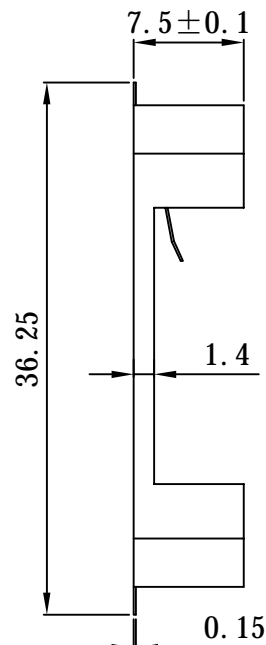
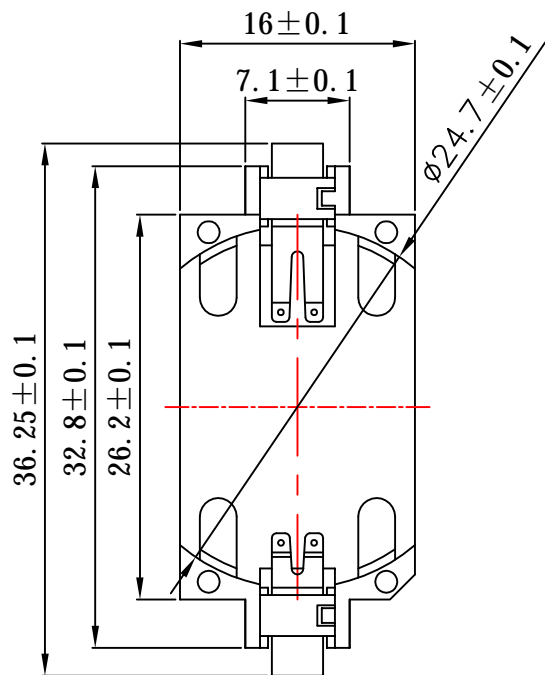


Kinghelm®



Technical Requirements:

Appearance: The product surface shall be clean, undamaged, and uniformly colored; free from visible defects such as dents, flash, short shots, silver streaks, or weld lines.

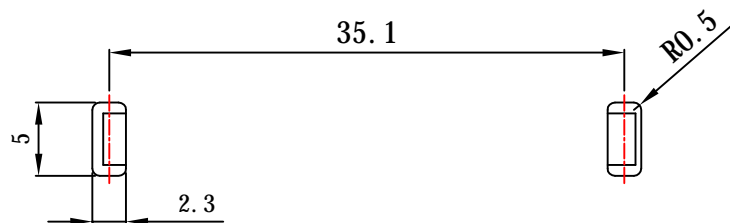
Material:

Color: Beige.

Surface: Clean and free from stains.

Dimensions: Inspection results shall comply with the specifications on the engineering drawing.

Mounting Dimensions



				Shenzhen Kinghelm Electronics Co., Ltd			
No. of Marked Locations		Change Document Number		Signed By		Date	
Designed By		Date		KH-BS2450-2-SMT		www.kinghelm.net	
Checked By		Date		Unit : mm		Product Name:	
Approved By		Date		Drawing Number		Weight	
				Scale		1: 1	
				Page 1 of 1		KH-BS2450-2-SMT	