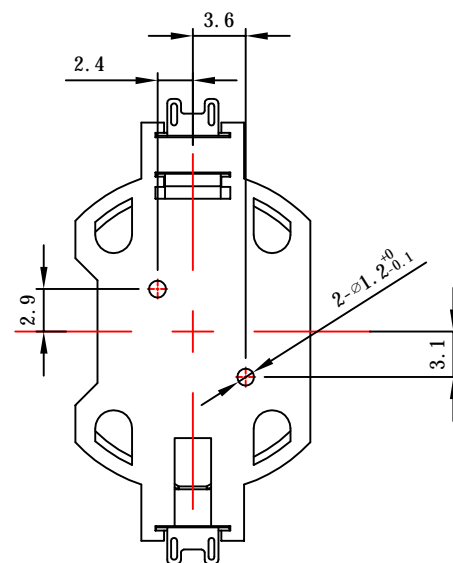
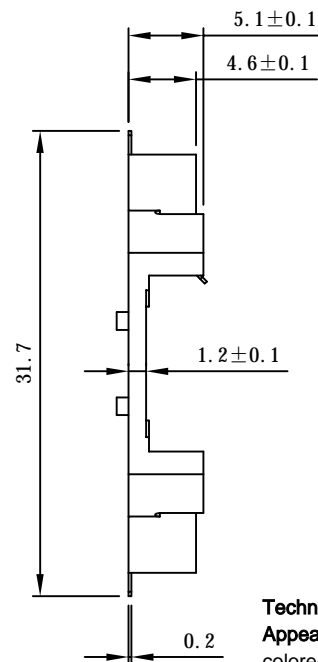
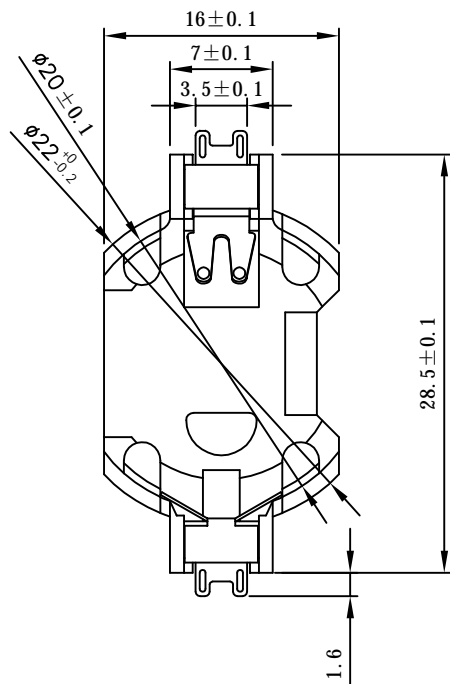
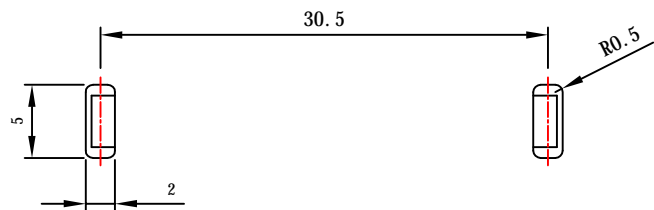


Kinghelm®



Mounting Dimensions



Technical Requirements:

Appearance: Product surfaces shall be clean, undamaged, and uniformly colored; free from visible defects such as dents, flash, short shots, silver streaks, or weld lines.

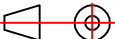
Material: Plastic: LCP (Liquid Crystal Polymer), heat-resistant to 265°C.

Metal: Phosphor bronze.

Plating: Nickel under tin plating, thickness: 3.0μm.

Surface: Clean and free from stains.

Dimensions: Inspection results shall comply with the specifications on the engineering drawing.

					Shenzhen Kinghelm Electronics Co., Ltd								
					KH-BSDZ-6-2-SMT			www.kinghelm.net					
No. of Marked Locations		Change Document Number		Signed By		Date			Unit : mm		Product Name: SMT BS-6-2		
Designed By				Date					Drawing Number			Weight	Scale
Checked By				Date								1: 1	
Approved By				Date					Page 1 of 1				