

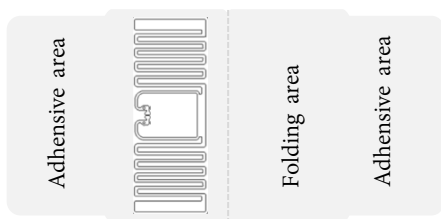
KH-RFID-8046-BQ Datasheet

Physical characteristics

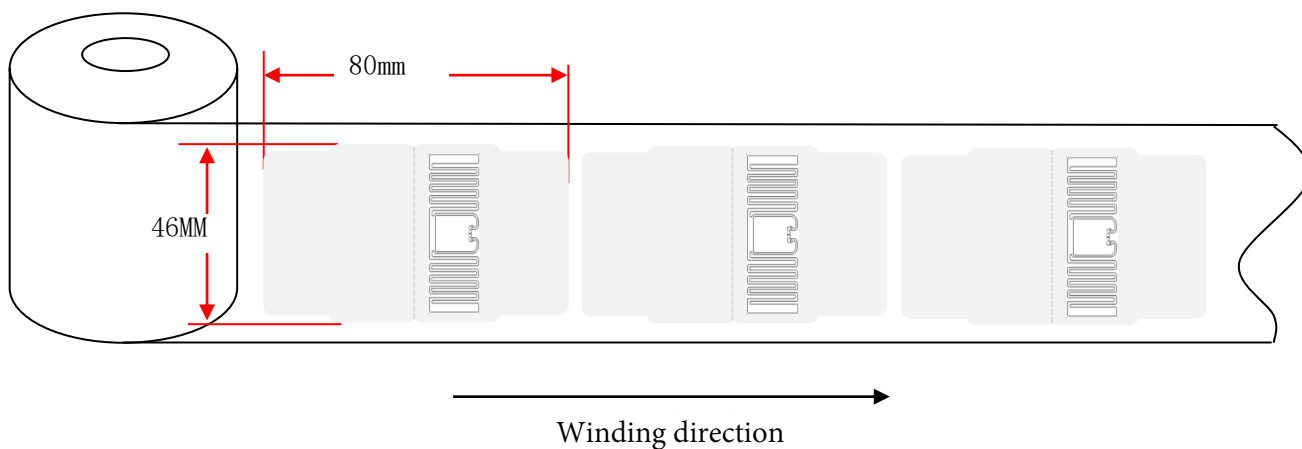
1 inlay Shape



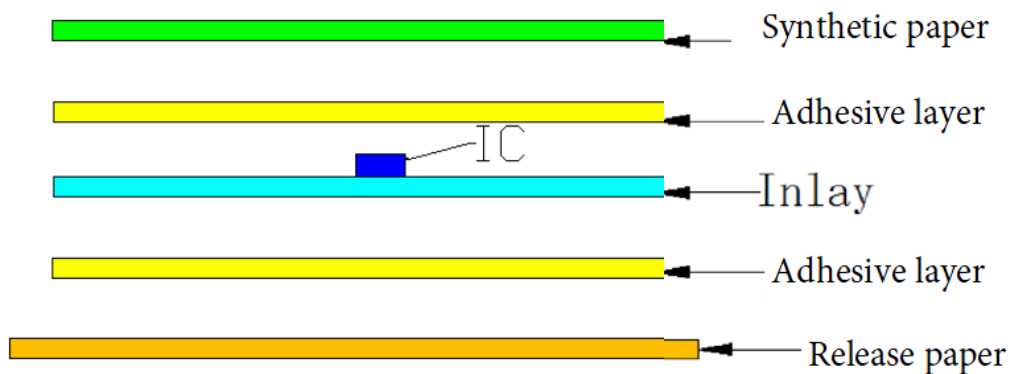
2 Product schematic diagram



3. Dimension specification



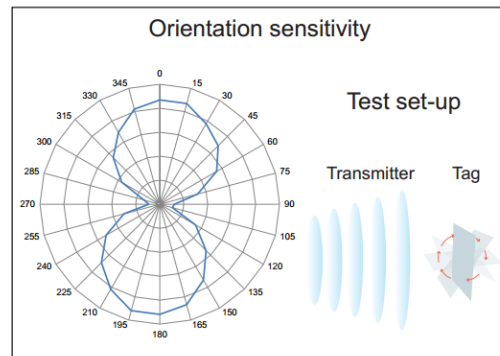
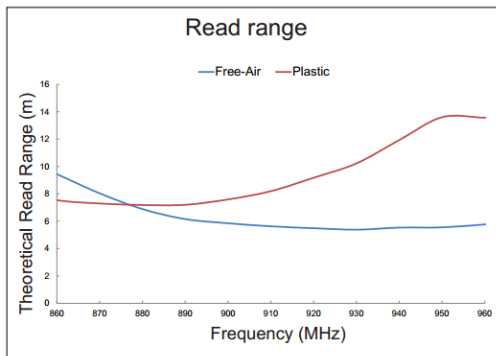
4. Schematic diagram of structure



Electrical Characteristics

| Item | Description | Remarks | |
|-------------------|---|--|---------------------------|
| Manufacturer/chip | Impinj/Monza 4E | | |
| Base material | 80 grams of art paper | | |
| Antenna | Al (9 μm)+PET (50 μm) | | |
| Protocol | ISO/IEC 18000-6C EPC Class1 Gen2 | | |
| Chip storage area | EPC | 128/496/128 Bits | Readable and writable |
| | TID | 48/48/48 Bits | Readable and not writable |
| | Password | 32Bits Access password 32Bits Inactivation code | Readable and writable |
| | User area | 32/128/512 Bits | Readable and writable |
| Frequency | 860~960MHz | | |
| Working mode | None | | |
| IC life | 100,000 programming cycles, 10 years data retention | | |
| ESD Performance | 2000V | (HBM) | |

III Performance parameters



IV Environmental requirements

Operating temperature: [-40 ° C to + 70 ° C] 20% to 90% RH Non-condensing;
 Applicable temperature: [-25 ° C to + 50 ° C] 20% to 90% RH Non-condensing;
 Shelf life of the finished product: sealed in anti-static bag, 2 years under the condition of + 20 C + ± 10 C/50% ± 10% RH.

V Packing

Vacuum packing 1000/roll, 4 rolls/box or 8 rolls/box