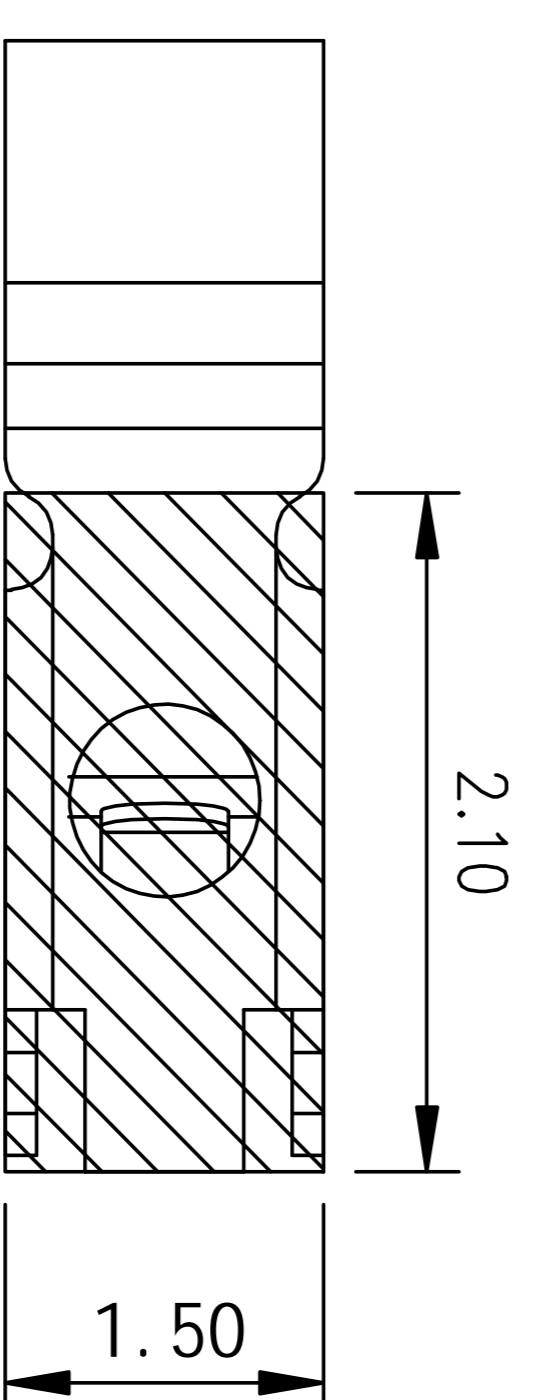
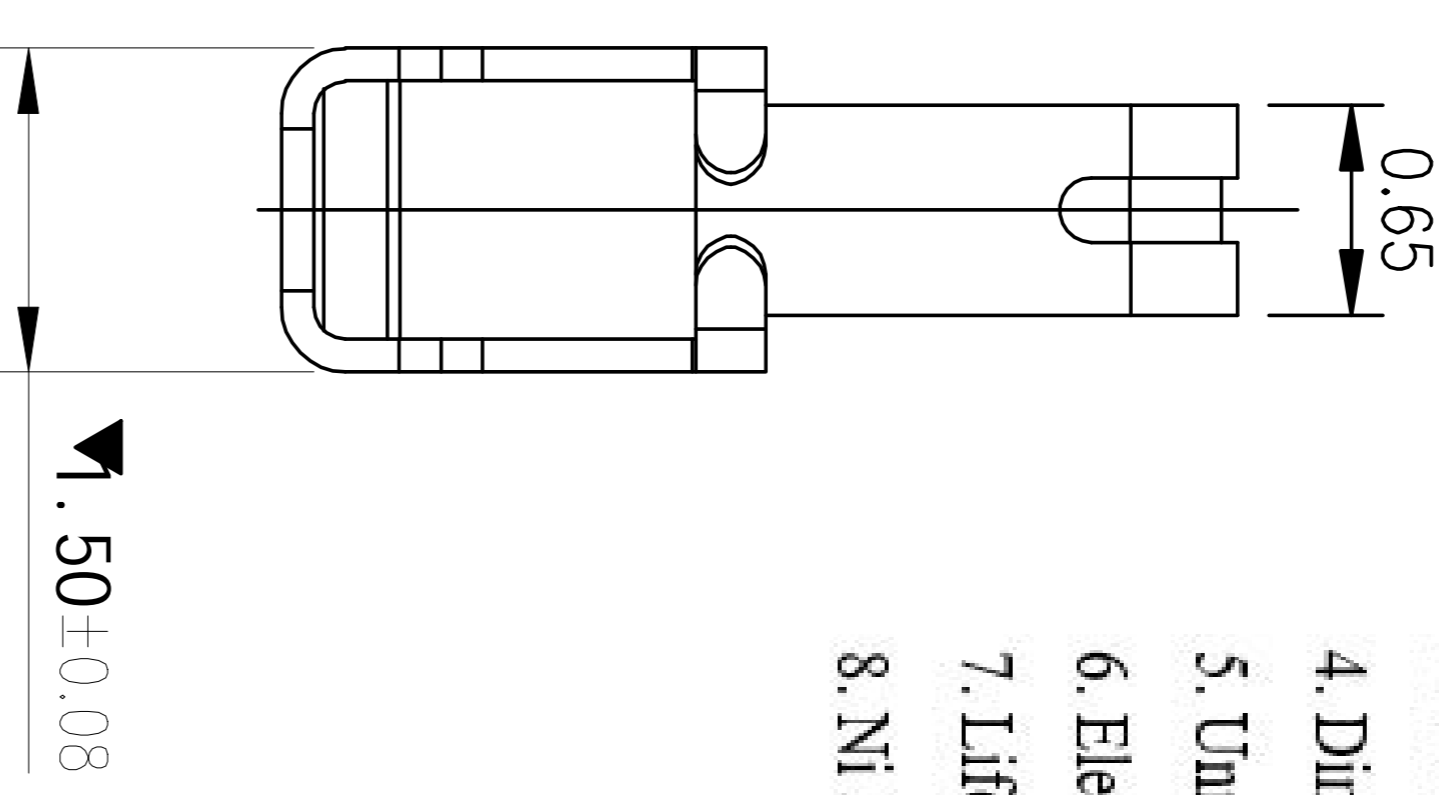
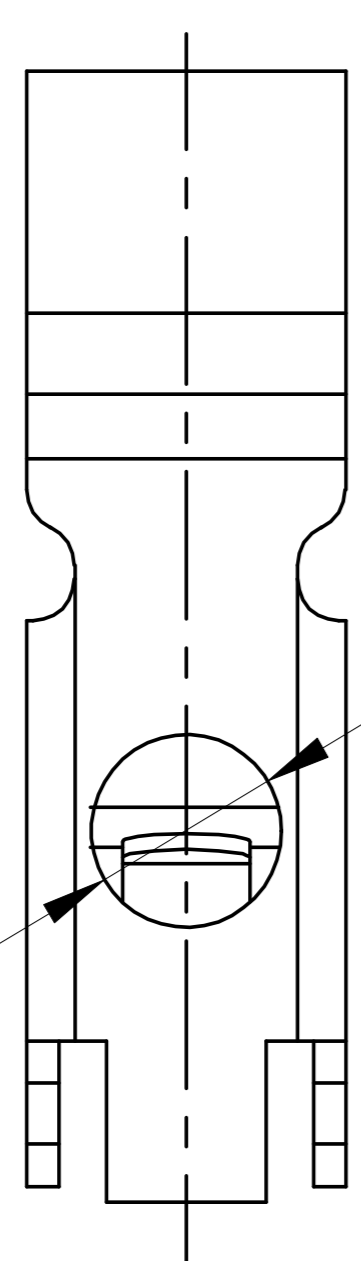
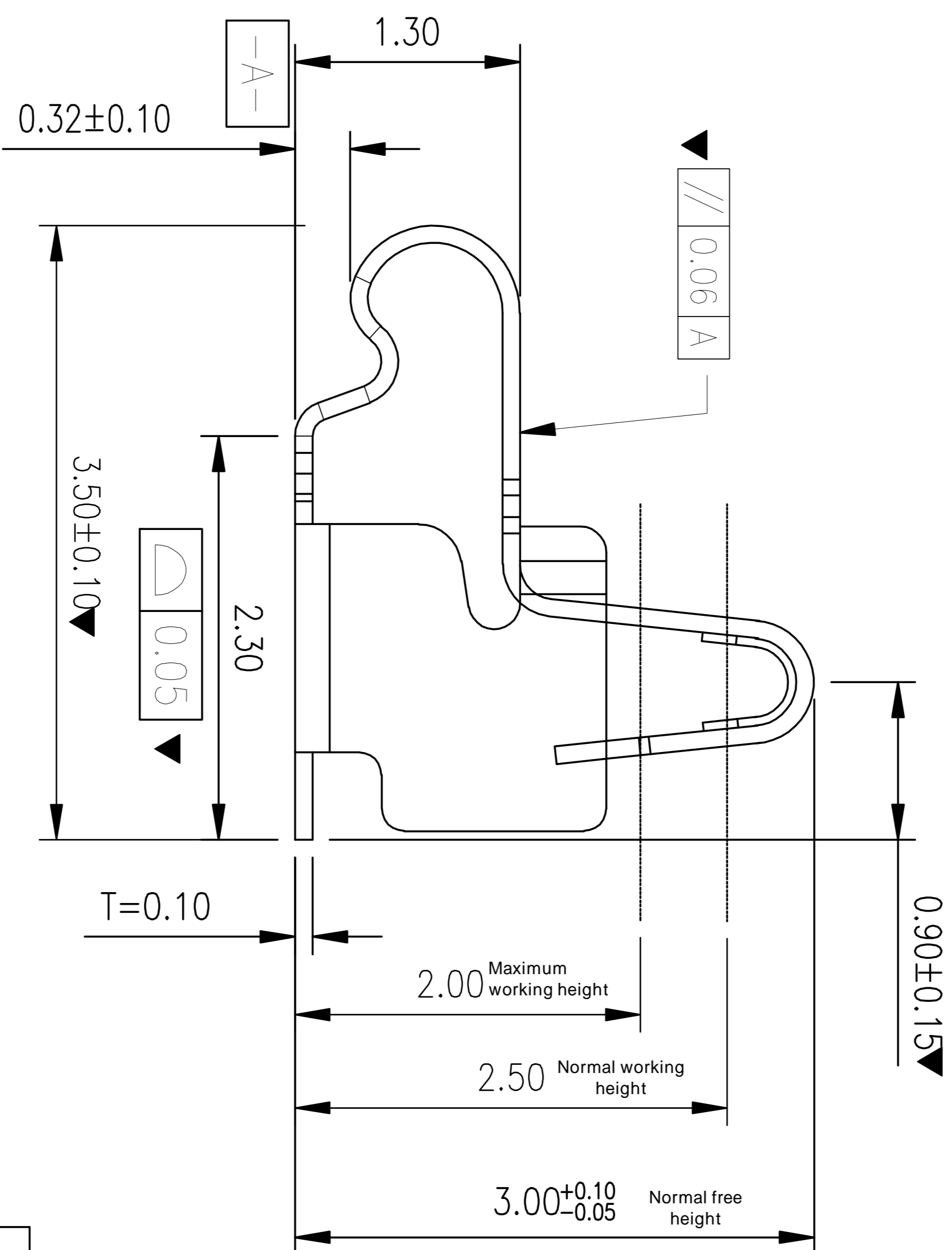
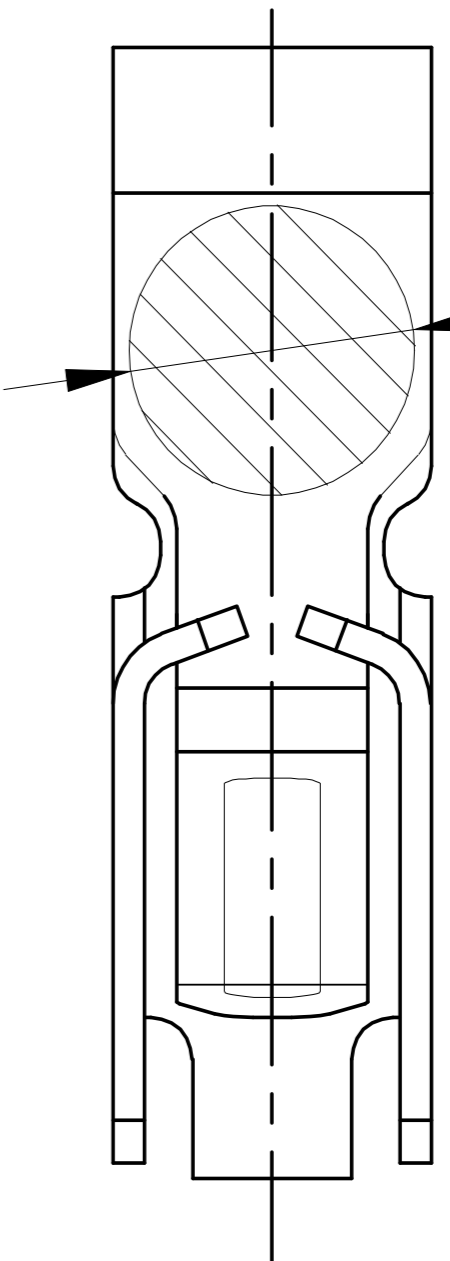
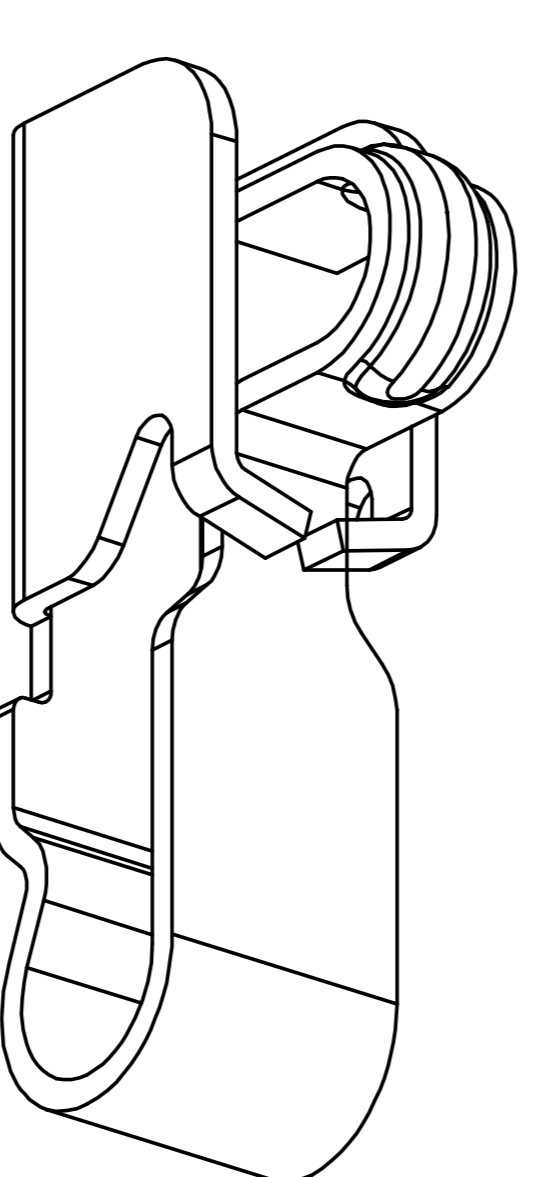


∅0.90 PICK UP AREA



Dimensional Tolerance  
±0.05



- ### Specification
1. Material: stainless steel SUS301, T = 0.10 ± 0.005;
  2. The welding and contact surfaces of the Tin terminal shall be free of burrs, and the maximum size of burrs in other parts shall be 0.03mm;
  3. Twisting: 45 ° / 1000mm, arch 5mm/1000mm;
  4. Dimensions marked with "▼" shall be measured and inspected with emphasis;
  5. Unmarked R Max R0.13;
  6. Electroplating must be inspected by 48-hour salt spray test;
  7. Life test > 20000 times The elasticity of the product shall be between 60gf and 80gf as required.
  8. Ni 50-80u"min, soldering area gold-plating, contact area gold plating3U"MIN

Rev.	ECN Number	Description	Date	Drawn	Checked	Approved

SHENZHEN KINGHELM ELECTRONIC CO., LTD.  
WWW.BDSS666.COM  
Model : KH-351530-TP  
0755-83044319

GENERAL TOLERANCE		SCALE:	DRAWN	DATE
XX. ±0.50		1:1	CHECK	DATE
X. ±0.35		UNIT: mm	APPROVE	DATE
.X ±0.25		SIZE: A4		
.XX ±0.15				

DWG. NO. 681-0031A-2  
PARTS NO.(INTENDED USE) JXH0031A2

TITLE: Customer's drawing  
RF Antenna Spring, SMT, L3.5\*W1.5\*H3.0mm  
REV. A  
SHEET 1/1