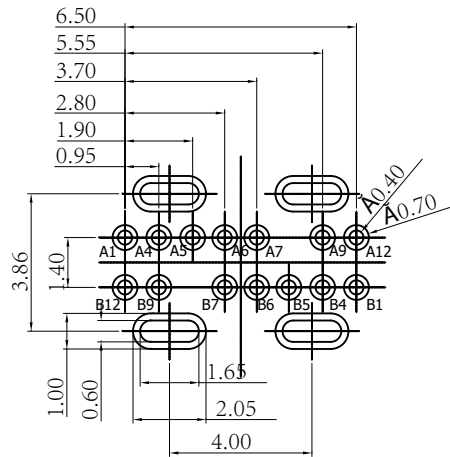
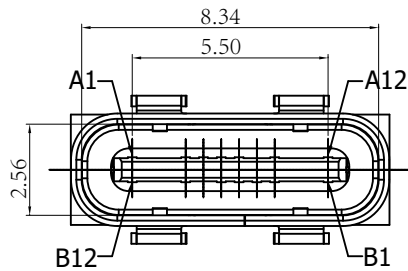
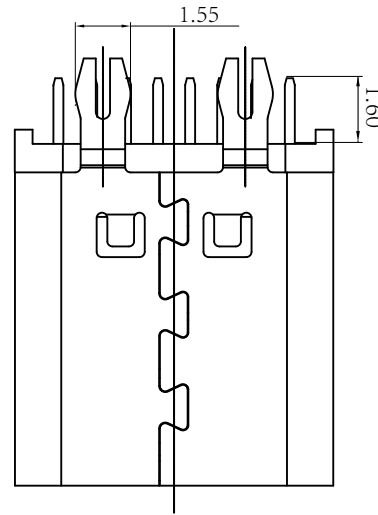
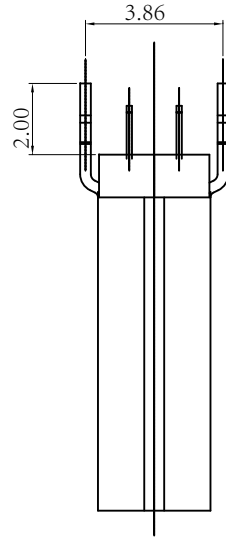
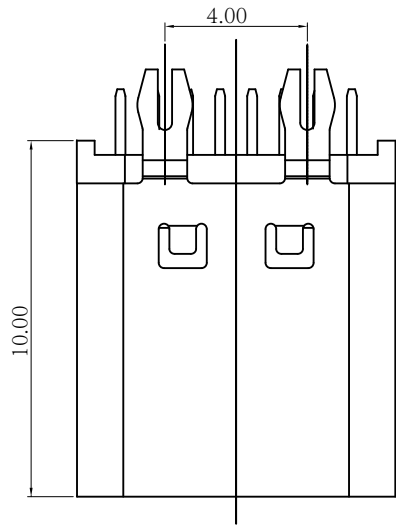
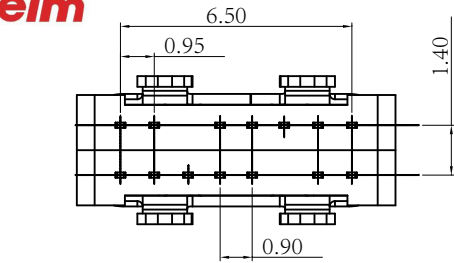


Kinghelm®



REV	DESCRIPTION	DATE	APPROVED
A/0	新版发行	2020.06.06	xiao

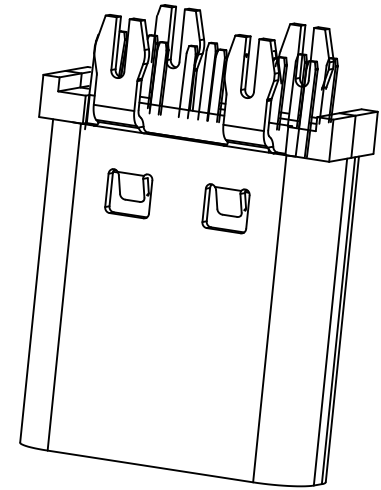
备注:

1. 材质:

- 1.1 胶芯: LCP+30%G.F UL94V-0
- 1.2 端子: 高导铜, T=0.15mm; 半金亮锡 1 μ"
- 1.3 外壳: SUS304, T=0.30mm; 镀镍 80 μ" MIN.
- 1.4 钢片: SUS301, T=0.15mm;

2. 主要特性:

- 2.1 额定电流: 5.0A
- 2.2 接触阻抗: 40MILLTOHMS MAX
- 2.3 绝缘阻抗: 150V DC/100 MEGA OHMS MIN
- 2.4 耐压测试: 100V AC/ 1MA MAX
- 2.5 沾锡性: 温度 250±5℃, 时间 5±0.5s
- 2.6 插入力: 5~20N 2. 拨出力: 8~20N
使用寿命: 10000次、拨出力 5N MIN
- 2.7 盐雾测试: 通过24H盐水盐雾无生锈现象
- 2.8 工作温度: -30℃~+80℃



TOLERANCES		深圳市金航标电子有限公司	www.kinghelm.com.cn
.X	±0.30	KH-TYPE-C-L10-14P-2.0	0755-28190160
.XX	±0.20		
.XXX	±0.10	APPROVED: TZ120 TITLE: TYPE-C 14P 180度立插 L=10.0	
ANGLES	±2.00°	CHECKED: TZ101 PART NO.:	
DRAWING: TZ125		REV.:	PROJECTION:
A/0	SIZE: A4	UNIT: M M	SCALE: 1:1 SHEET: 1/1