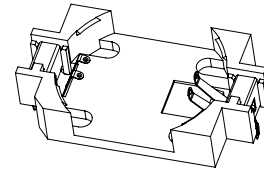
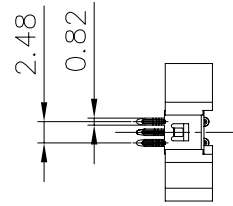
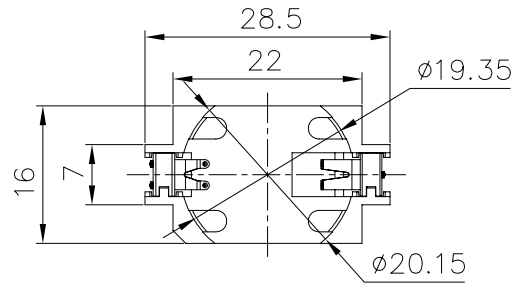


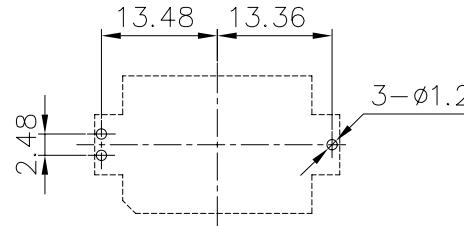
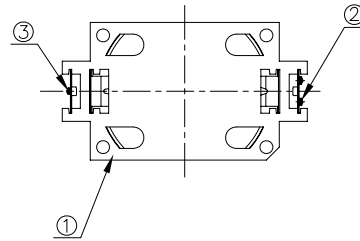
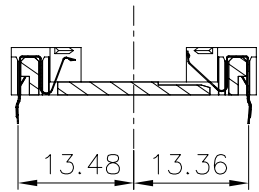
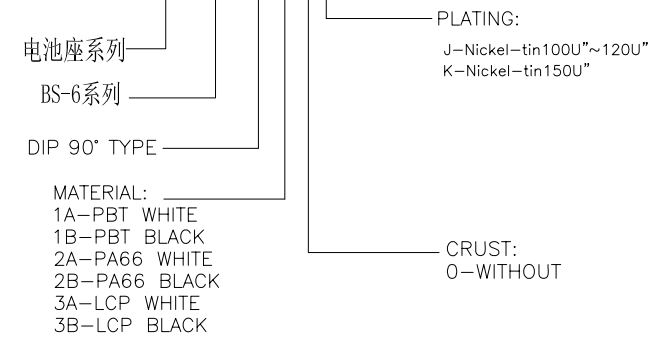
REV.	MATTER	APP.	DATE
A			



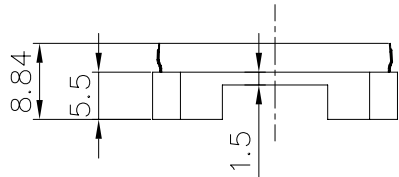
NOTE:
 1.MATERIAL:
 a.HOUSING:THERMOPLASTIC GLASS FIBRE UL94V-0
 b.CONTACT:PHOSPHOR BRONZE
 (SURFACE PLATING: Nickel-tin100u")
 SEE ORDERING INFORMATION
 2.ELECTRIC:
 a.CONTACT RESISTANCE: 30 MILLIOHMS MAX
 b.INSULATION RESISTANCE: 1000 MEGA OHMS MIN
 c.DIELECTNIC VOLTAGE: 750V AC ONE SEC LEVEL
 d.OPERATING TEMPERATURE: -55°C~ +85°C

ORDERING INFORMATION

BS-06-A0*003**



PCB HOLE LAYOUT



TOLERANCE		Tolerance: Unless otherwise specified			
LINEAR x. ±1 .x ±0.38 .xx ±0.25 .xxx ±0.10 ANGLE x.' ±5' .x' ±2' .xx' ±1'	3	TERMINAL-2	PHOSPHOR BRONZE	Nickel-tin-Plated	
	2	TERMINAL-1	PHOSPHOR BRONZE	Nickel-tin-Plated	
	1	HOUSING	LCP	WHITE	
	NO.	PART NAME	MATERIAL	COLOR/FINISHED	

日期 DATE	单位 UNITS	审核 CHECK	BATTERY HDLDER	PART NO.	
	2009.8.28	mm			BS-06-A3A0J003
	比例 SCALE	制图 DRAW	设计 DESIGN	TITLE: 两PIN电池座卧式 (BS-6DIP)	
	1/1			深圳市金航标电子有限公司	www.kinghelm.com.cn
			KH-BS-6-1	0755-28190160	