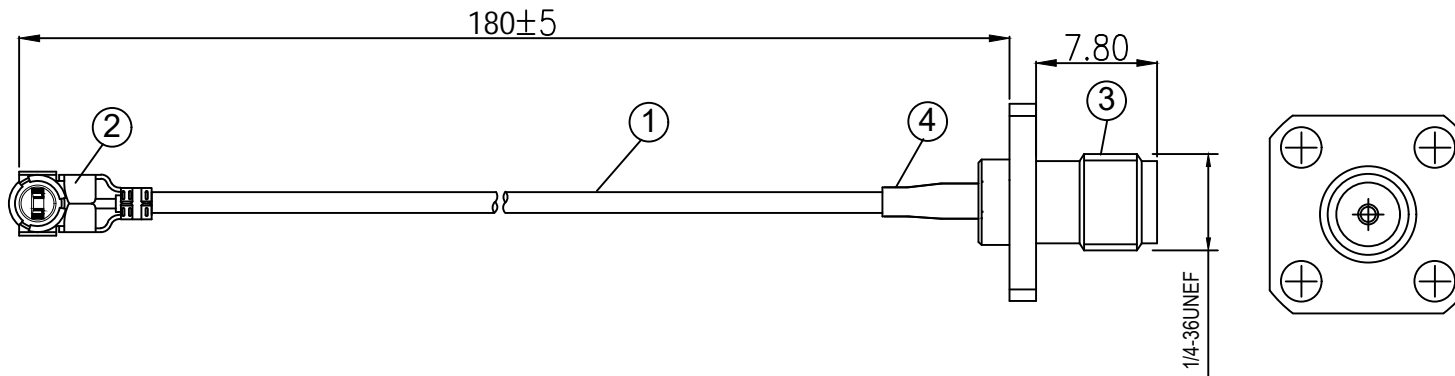


Kinghelm®

| REVISIONS | | | | | |
|-----------|--------|-------------|-------|-----|------|
| REV | NUMBER | DESCRIPTION | DWN | CHK | DATE |
| A | | DESIGN | James | | 9/26 |



NOTES:

1.ELECTRICAL:

- 1.1.VOLTAGE RATING:DCV 300V10MS
- 1.2.CONDUCTANCE RESISTANCE:3.0 OHM/MAX.
- 1.3.INSULATION RESISTANCE:5.0M OHM/MIN.
- 1.4.THE CABLE SHOULD BE 100% ELECTRICAL TEST
- 1.5.IT SHOULD BE NO ANY OPEN/SHORT,MISWIRING AND INTERMITTENT FAILURES.

2.MATERIAL:

2.1.SEE TABLE

3.ALL COMPONENTS ARE RoHS COMPLIANT.

| ITEM NO. | PART NUMBER | DESCRIPTION | QTY. |
|----------|---------------|---|------|
| ④ | Tube | OD:2.5x15mm black heat shrink tubing | 1 |
| ③ | Terminal | SMA female jack, female contact, 4-hole flange, gold-plated | 1 |
| ② | Connector | I-PEX Gen 1 1.13 terminal, gold-plated | 1 |
| ① | Coaxial Cable | RG-1.13 black cable, OD:1.10mm | AS |

Shenzhen Kinghelm Electronics Co., Ltd

www.kinghelm.net

| | | | |
|---|--|---------------|--|
| ALL DIMENSION ARE IN MM | DRAWN James | DATE 2023-3-1 | TITLE KH-FLSMA-IPEX113-180 (Gold-plated 4-hole flange SMA to Gen 1 IPEX 1.13, black cable, length 180MM) |
| | CHKD. Frank | 2023-3-1 | |
| COMPUTER GENERATED IN SOLIDWORKS DO NOT SCALE THIS DRAWING | APPD. Scott | 2023-3-1 | |
| PROJECTION | GENERAL TOLERANCE FOR ANGLES X.X X.XX X.XXX ±1° ±0.3 ±0.25 ±0.150 | | SIZE DWG Number. REV |
| | | | B A |
| CUSTOMER P/N: | SCALE:Free | TYPE | SHEET 1 OF 1 |